



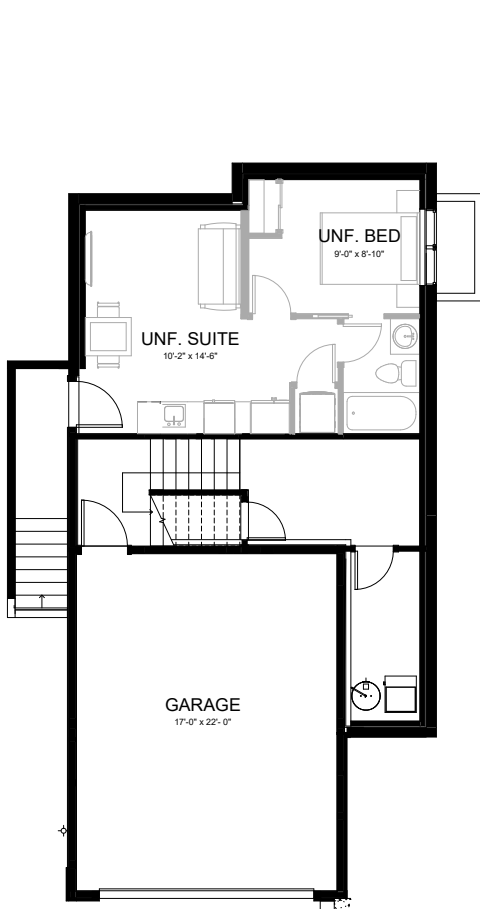
# TRAIL HOMES FLOOR PLANS

3  
BED

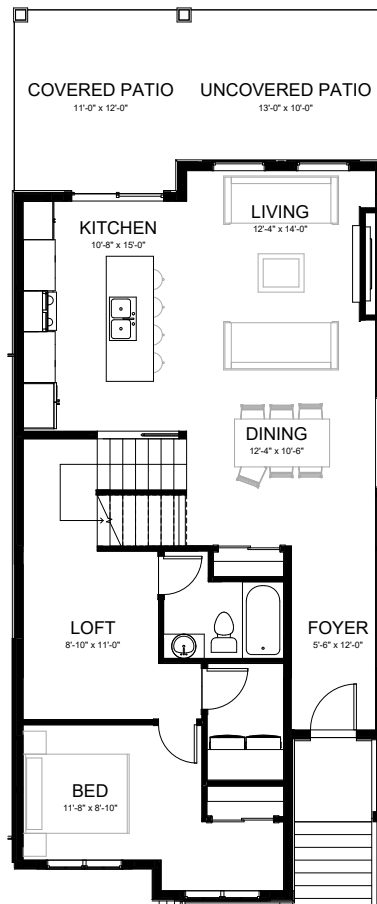
2  
BATH

1,912 SQ. FT.  
UNFINISHED BASEMENT

2,319 SQ. FT.  
WITH BASEMENT SUITE



**BASEMENT**



**MAIN FLOOR**



**UPPER FLOOR**

Layouts will vary. Ask sales associate for details.

All images used are for illustrative purposes only and are intended to convey the concept and vision for the development/apartments/houses. They are for guidance only, may alter as work progresses and do not necessarily represent a true and accurate depiction of the finished product. All images and dimensions are not intended to form part of any contract or warranty. All measurements are approximate. Ask sales associate for more details.



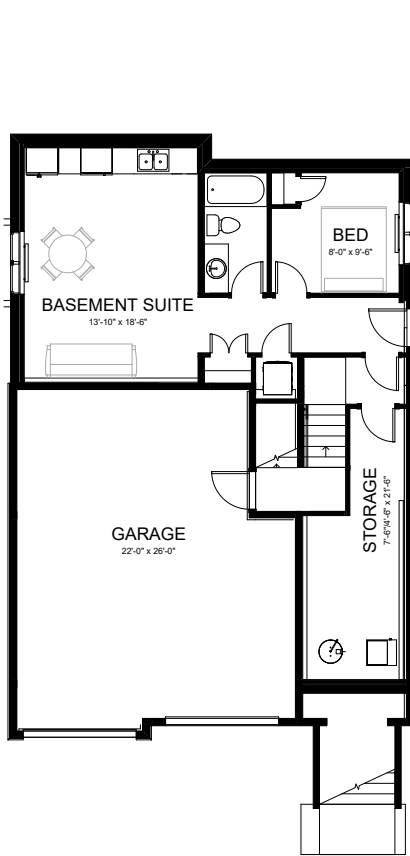
# TRAIL HOMES FLOOR PLANS

4  
BED

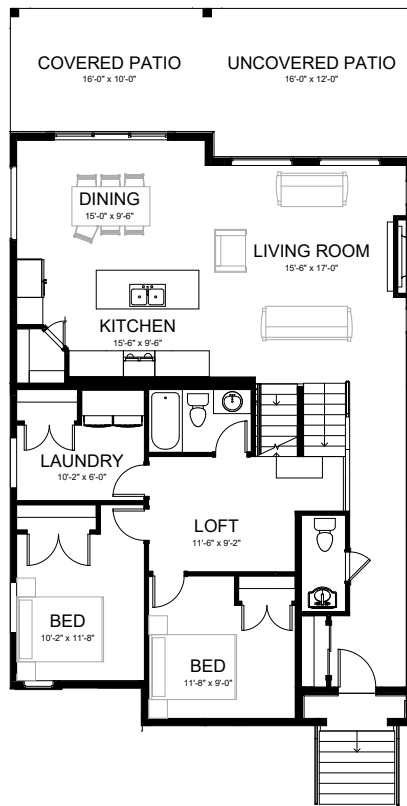
2.5  
BATH

2,157 SQ. FT.  
UNFINISHED BASEMENT

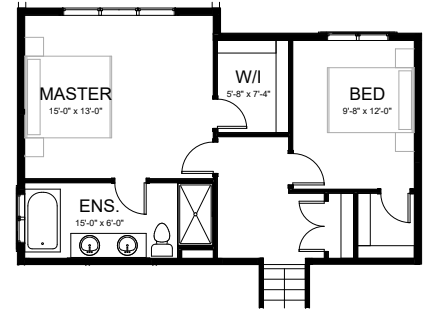
2,754 SQ. FT.  
WITH BASEMENT SUITE



**BASEMENT**



**MAIN FLOOR**



**UPPER FLOOR**

Layouts will vary. Ask sales associate for details.

All images used are for illustrative purposes only and are intended to convey the concept and vision for the development/apartments/houses. They are for guidance only, may alter as work progresses and do not necessarily represent a true and accurate depiction of the finished product. All images and dimensions are not intended to form part of any contract or warranty. All measurements are approximate. Ask sales associate for more details.